

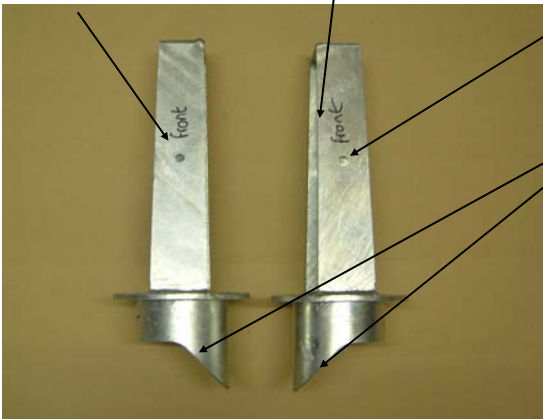
Fir Bank Garage  
Llanfair Caereinion, Welshpool, Powys.  
SY21 OBH  
Tel: 01938 810298  
Mobile: 07831257666



## Challenge Front Turrets & Hooked Spring Retainers

R/H

L/H



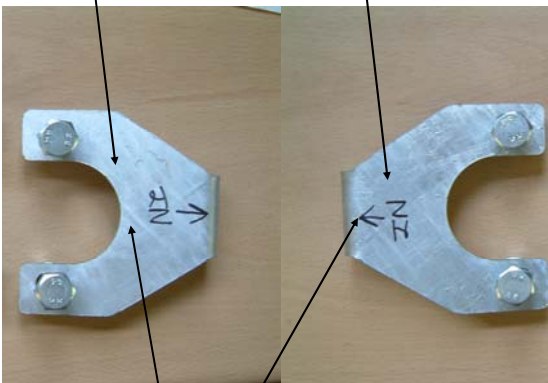
The front turrets are to be fitted with the hole and the writing facing forwards towards the bumper.

The longest part of the re-locator is to be closest to the chassis.

The front spring retainers are to be fitted with the hook facing down and the arrow marked on the retainer facing in towards the diff. This picture shows the top of the re-locator. The hook part of the retainer then clamps the spring to the spring seat. Once the retainer is bolted in place loosely, twist the spring until it wedges between the retainer and the spring seat then tighten the bolts.

R/H

L/H



Top

Front spring retainer Fitted.



On certain models the water header tank may need spacing out to stop the top of the shock fouling the bottom of the tank.