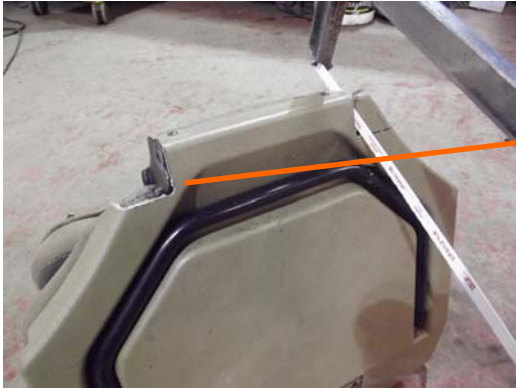


GL101 Dickie Seat Mount Dickie Seat Base Fitting Guide



You will need to cut your seats as in the picture to allow them to fold up and down. You will need to file away the small metal tag as well.



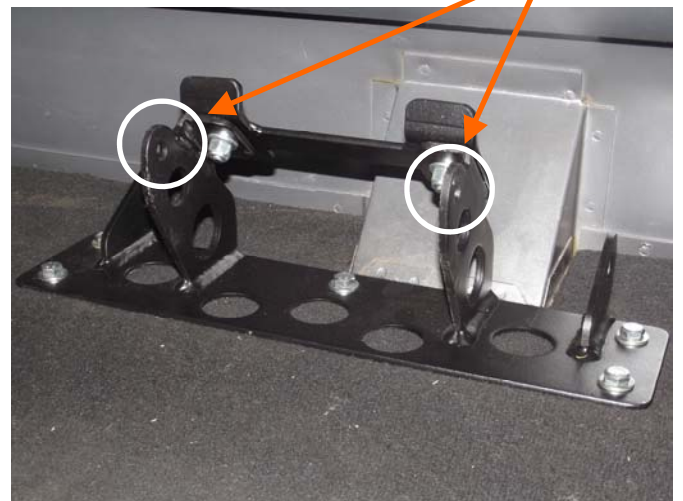
You will require the two longer shoulder bolts that are part of the seat frames on the Discovery, if you haven't got them you can make them out of an M6x35 bolt, two M6 nuts and one washer.



This is a made up shoulder bolt that you can make if you do not have the original. You will need to file the two nuts to make them 10mm round.

The shoulder bolts are used where arrowed, they are the hinge point of the seat base and seat back as well.

Temporarily assemble the seat base mount with the dickie seat and adjust the back stop so that the seat back is in a comfortable position. Make sure that the base will tilt up and down without fouling on anything before drilling the floor and bolting down the seat base mount.



Seat belts can be fitted to the mounting points.

