

Fir Bank Garage  
Llanfair Caereinion, Welshpool, Powys.  
SY21 OBH  
Tel: 01938 810298  
Mobile: 07831257666



**GL1012 Defender Rear X Member Mud Shield Fitting Guide**

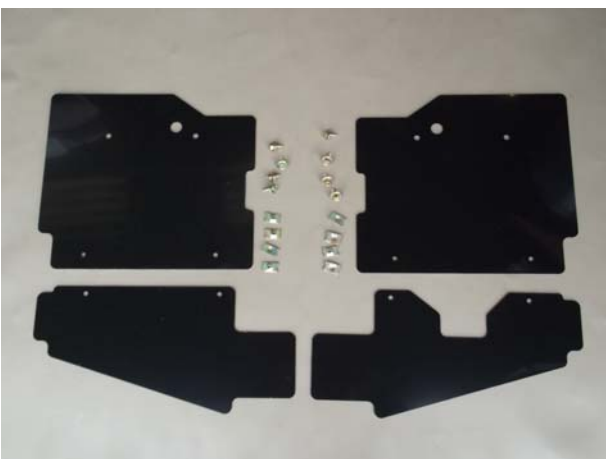
**GL1013 Defender Rear X Member Mud Shield Fitting Guide**



**GL1012**  
Stepped Tub

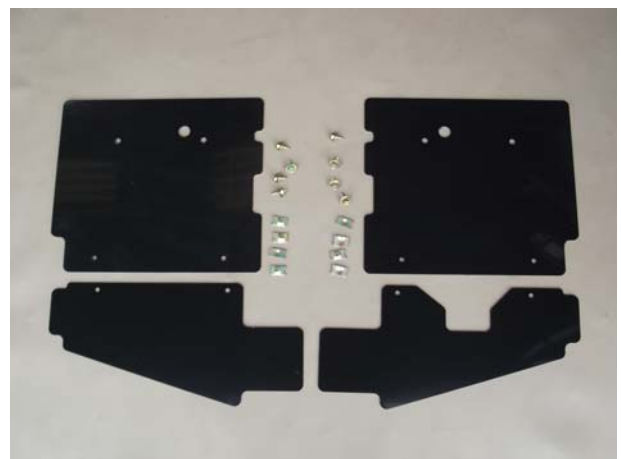


**GL1013**  
Square Tub



**Items in Kit GL1012**

- 4x - Mud Shields
- 8x - Speed Screws
- 8x - U Nuts

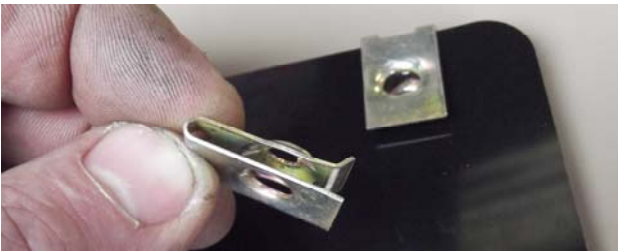


**Items in Kit GL1013**

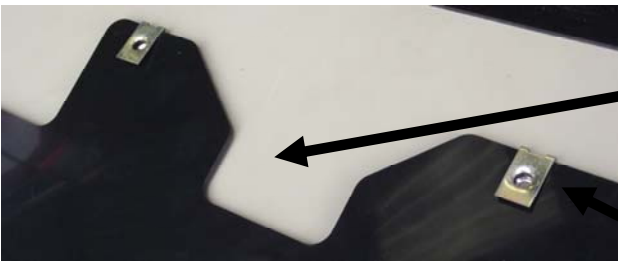
- 4x - Mud Shields
- 8x - Speed Screws
- 8x - U Nuts



Remove your original mud shield and fit 2 new U Nuts



Four U Nuts need to be fitted to the lower mud shields, you will find it easier to open them up a little with a screwdriver to fit them.



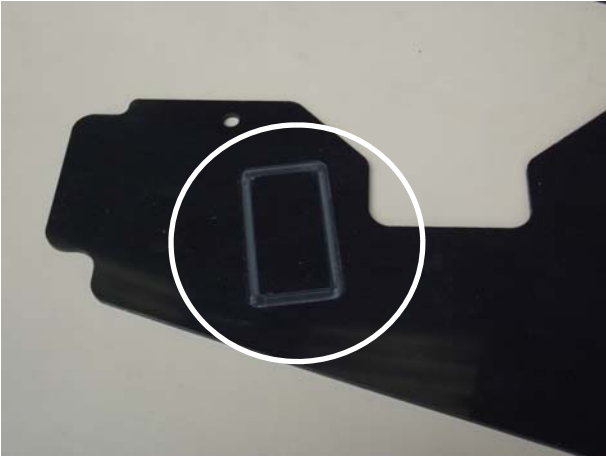
(cut out for exhaust hanger on the X member)



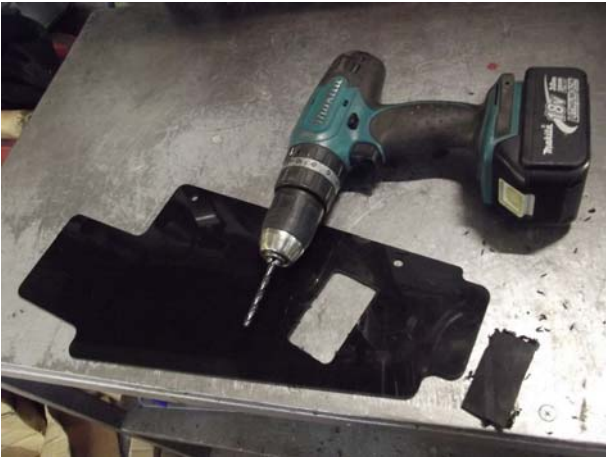
U Clips Fitted



Fit the upper mud shields first and loosely fasten with two speed screws, you can then slide the lower mud shield in behind the top one and fit another two speed screws, align both shields and tighten.  
Fitting is the same for both sides but on the exhaust side there is a cut out on the lower mud shield to allow for the exhaust hanger on the X member (see the third picture)  
There should be no need to remove the exhaust to fit these shields.



If you have rear seats fitted you may have a stay bolted to the rear X member, this is an anchor point for your seat belt mount . On the lower mud shield there is a cut out marked, you will need to cut this out to allow the shield to fit round the stay, I've used a 5mm drill bit in a drill and just worked around the slot to cut it out.



Once the hole is cut out and the stay unbolted and completely removed you can fit the shield as normal.



Once all is aligned the stay can now be re-fitted. Circled are the fixing points of this stay.