

Fir Bank Garage
Llanfair Caereinion, Welshpool, Powys.
SY21 OBH
Tel: 01938 810298
Mobile: 07831257666



GL1019 90 Front of Rear Wheel Mud Shields Square Rear Tub

GL1020 90 Front of Rear Wheel Mud Shields Stepped Rear Tub, TDCI CSW Style, 2007 onwards

GL1019
Square Tub



GL1020
Stepped Tub



GL1019
Square Tub



GL1020
Stepped Tub

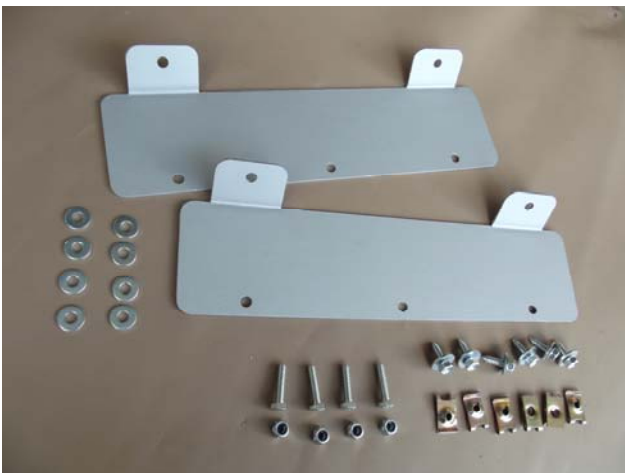




Items in kit **GL1019**
Square Tub
 1 x GL10890 Top Mount Bracket
 1 x GL109 A/B Body Stay Mountings
 1 x GLP19RHLH Mud Shield



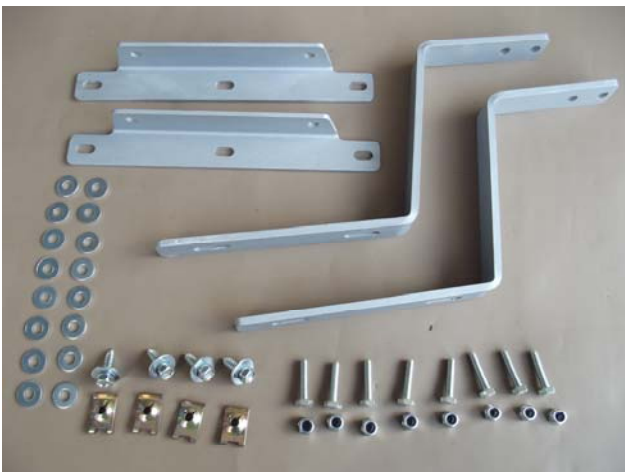
Items in kit **GL1020**
Stepped Tub
 1 x GL10390 Top Mount Bracket
 1 x GL109 A/B Body Stay Mountings
 1 x GLP19RHLH Mud Shield



GL10890 Top Mount Bracket
 Square Tub.



GL10390 Top Mount Bracket
 Stepped Tub.



GL109 A/B Body Stay Mounting Kit.



GLP19 RHLH Mud Shields

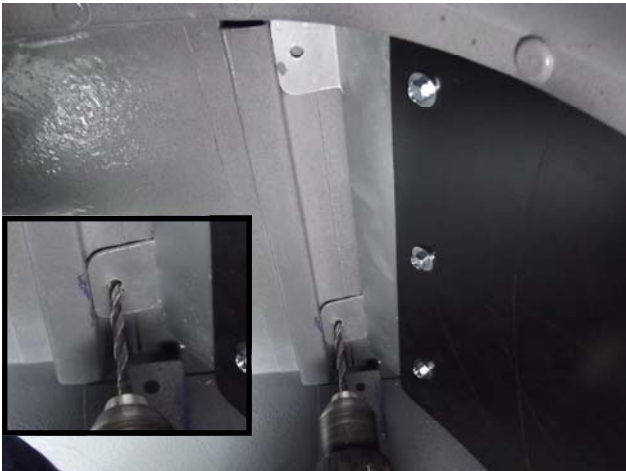


If fitting this kit to a TD5 or Pu-
ma TD4 you'll need to cut the
Mud Shield to fit around the
Fuel Filter. The Mud Shield has
a cut line marked on the rear,
use a hacksaw blade to cut this
off.

Fitting Guide For **GL1019** Square Rear Tub



Fit the 3 U-Clip fasteners to the
top mounting bracket as shown.



Temporarily fasten the Mud Shield to
the Top Mounting Bracket with three
speed screws as shown.

**Take note of the position shown in
the picture below.**

Centralise the shield in the tub, make
sure you are happy with the position
of the shield before you drill the
holes.

Once you are happy with the position
mark and drill the two holes with a
6.5mm drill bit. Make sure there is
nothing above where you are drilling
the holes.



Take note of where to position the
GL10890 Top Mountings before drill-
ing.

Once drilled remove the Mud Shield
and bolt the Top Mounting Bracket in
place using two M6 x 25mm bolts,
two M6 nyloc nuts and four washers.
Before you bolt up the steel bracket
smear plenty of grease between the
two surfaces to help stop corrosion.

Fitting Guide For **GL1020 Stepped Rear Tub**



Fit the 3 U-Clip fasteners to the top mounting bracket as shown.



Temporarily fasten the Mud Shield to the Top Mounting Bracket with three speed screws as shown.

Take note of the position shown in the picture below.

Centralise the shield in the tub, make sure you are happy with the position of the shield before you drill the holes.

Once you are happy with the position mark and drill the two holes with a 6.5mm drill bit. Make sure there is nothing above where you are drilling the holes.

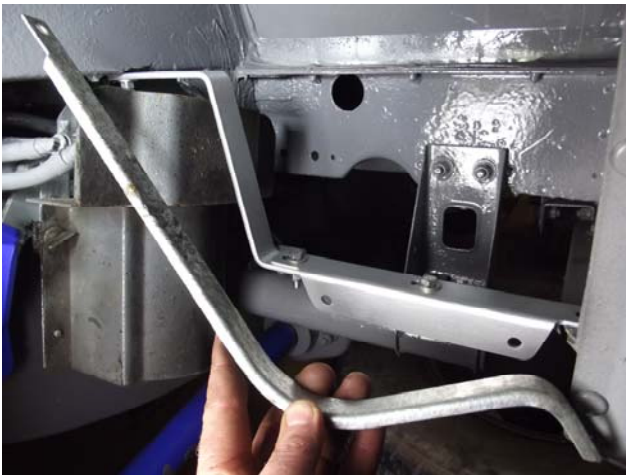


Take note of where to position the GL10390 Top Mountings before drilling.

In this position there is no need to remove the cover over the seat frame inside, the bolt will sit along side the plastic cover.



Once drilled remove the Mud Shield and bolt the Top Mounting Bracket in place using two M6 x 25mm bolts, two M6 nyloc nuts and four washers. Before you bolt up the steel bracket smear plenty of grease between the two surfaces to help stop corrosion.



Now remove the original Body stay and start fitting the new heavy duty Body Stay.



The Body Stay has two positions, use the appropriate hole as shown in the picture. Bolt up with one M6 x 25mm bolt, one nyloc nut and two washers.



Now fit the lower body stay as pictured using three M6 x 25mm bolts, three M6 nyloc nuts and six washers. The holes are slotted so you can square up the side panel. Apply plenty of grease between mating surfaces



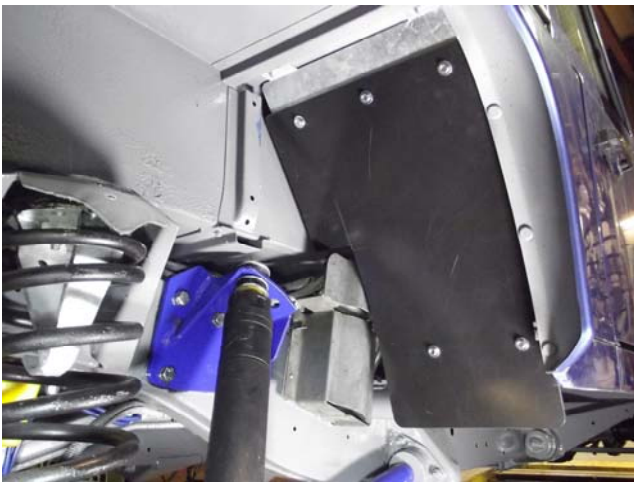
Now temporarily fit the Mud Shield in place and mark out the two holes to be drilled (circled in picture) Make sure you are happy with the position of the shield before you drill the holes. Remove the shield and drill the two holes with an 8mm drill bit.



Fit the two U-Clips to the body stay as shown.



You can open up the 4 U-Clips by pushing a screwdriver in to them to make it easier to fit over the thicker body stay.



Square Tub Fitted

Now you can re-fit the Mud Shield, make sure you put plenty of grease on the fixing screws and bolts to help stop corrosion.



Stepped Tub Fitted

A colour PDF version of these fitting instructions can be downloaded from our website:
www.gwynlewis4x4.co.uk