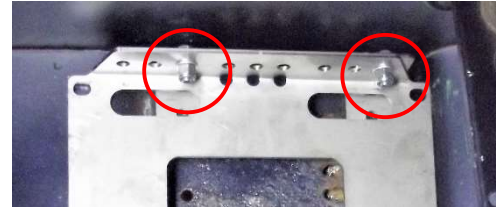


## Defender Battery Tray Fitting Instructions

This battery tray fits into the battery box of all Defenders, it is also a universal fit for other applications and will take many different batteries up to 180mm wide & 200mm tall. Made out of 3mm Stainless Steel.

Firstly, fit the 'L' shaped brackets as pictured on each corner of the battery tray. The angle brackets' longer side bolts to the tray's side.



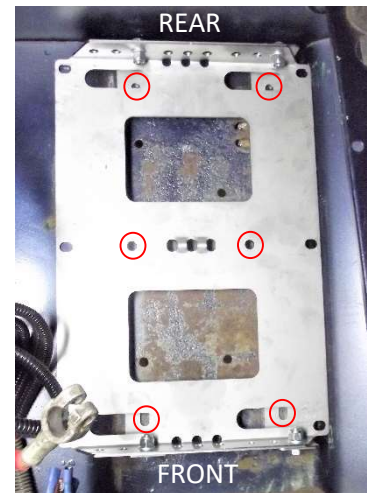
Position the tray as far back as possible in the battery box, this gives more room in the front for wiring and battery isolators. Before fitting make sure your batteries fit as the seat box tapers backwards.

Now you can drill all 6 holes with an 8.5mm drill bit.

Once all 6 holes are drilled fit the two 24mm long nuts(spacers) in the two middle holes, as shown in the picture, and use the shorter M8x14 bolts and washers



to secure them from underneath the battery box.



Before fitting the tray into the battery box fit the three threaded rods to the tray, these will need to be pushed through from underneath the tray, as demonstrated in the photo, and then fit the M6 nuts, this stops them from falling off.

Now you can drop the tray into the battery box and bolt it into place.



Use plenty of grease on fixing threads, this will prevent the fixings from seizing, (cold welding) or (Galling) this is common with stainless steel fixings, using plenty of grease will prevent the problem from happening, we use MORRIS K48 grease.

